

SIERRA MUSIC PRESENTS
THE BOB CURNOW BIG BAND SERIES

WRITER'S CRAMP

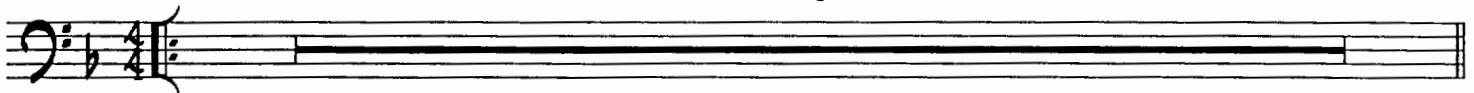
AS PERFORMED BY THE STAN KENTON ORCHESTRA

TROMBONE 1

BOB CURNOW

$\text{♩} = 120$ SHUFFLE SWING

8



TROMBONE 1 - WRITER'S CRAMP - PG. 2

First staff of music, bass clef, key signature of one flat. It begins with a slur over three eighth notes, followed by a first ending bracket labeled '1.' containing a quarter note and a quarter rest. The staff continues with eighth notes and quarter notes, ending with a double bar line.

Second staff of music, bass clef, key signature of one flat. It starts with a second ending bracket labeled '2.' containing a quarter note and a quarter rest. This is followed by eighth notes and quarter notes. A measure box labeled '39' is present. The staff ends with a double bar line.

Third staff of music, bass clef, key signature of one flat. It contains rests for the first two measures, followed by a measure box labeled '47'. The staff continues with a quarter note, a quarter rest, and a quarter note with a sharp sign. It ends with a double bar line.

Fourth staff of music, bass clef, key signature of one flat. It begins with a measure box labeled '52'. The staff contains eighth notes, quarter notes, and triplet markings (indicated by '3' above groups of notes). A measure box labeled '55' is present. The staff ends with a double bar line and the dynamic marking 'mf'.

Fifth staff of music, bass clef, key signature of one flat. It contains eighth notes and quarter notes. A measure box labeled '4' is present. The staff ends with a double bar line and the dynamic marking 'f'.

TURN PAGE

