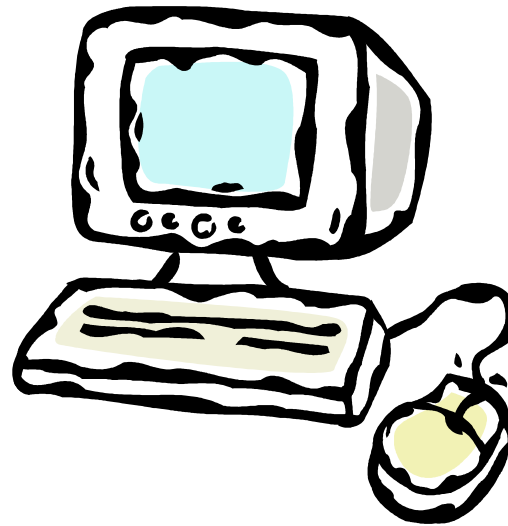


EDMONDS COMMUNITY COLLEGE

COMPUTER RESOURCES FOR STUDENTS

**Computer Labs, Libraries and Other Resources for
Computer Access**

Fall 2009



COMPUTER RESOURCES AVAILABLE FOR EDMONDS COMMUNITY COLLEGE STUDENTS

On-Campus Computer Resources available for Edmonds Community College Students

(Includes Open and Specialized Labs--Hours may change, please call to confirm hours)

LOCATION	PRIMARY USE	WHO CAN USE	*HOURS	EQUIPMENT/SOFTWARE/SERVICES	CONTACT
ALD 101 - 105	Open Lab when not in use for classes	EdCC/CWU students	Generally M-Th 7:00a – 9:45p Fri 7:00a – 4:45p when not in use for classes, hours vary qtr. by qtr.	http://www.edcc.edu/acs/Software.php Lists specialized software in campus labs. Lab Assistant available near the computer labs.	425-640-1702
Brier 240	Diversity Student Center Computer Lab	EdCC and CWU students	M – Th 8:00a – 5:00p	3 PC's, printer; space for collaborative or group work	425-640-1067
LYN 3rd Floor	Learning Commons Library Research and Open Lab	EdCC/CWU students	M – Th 7:30a – 8:45 p Fri 7:30a – 2:45 p Sat-Sun 12:00p – 4:45p	115 PC's, 6 shared printers Includes Quiet Lab http://www.edcc.edu/acs/Software.php lists specialized software in various campus labs. Lab Assistant on duty all open hours. Library Reference and Research Assistance available all open hours.	425-640-1472
LYN 303	Library Classroom	EdCC/CWU students	Open Lab when classes are not scheduled in the classroom	23 PC's, 1 shared printer	425-640-1472
LYN, 1st Floor	Advising Resource Center	EdCC/CWU and prospective students	M – Tu 8:00a – 8:00p W – Th 8:00a – 6:00p F- 8:00a – 5:00p	10 PC's, printer Available for registering online; FAFSA; Schedule Planner; researching majors, and transfer institutions only.	425-640-1458

COMPUTER RESOURCES AVAILABLE FOR EDMONDS COMMUNITY COLLEGE STUDENTS

LOCATION	PRIMARY USE	WHO CAN USE	HOURS	EQUIPMENT/SOFTWARE/SERVICES	CONTACT
MUK 107	Tutorial Center	Students working with tutors in computer or accounting classes	M, Th 8:30a – 4:00p T, W 8:30a – 6:00p F 8:30a – 12:30p	9 PC's	425-640-1750
MUK 113	Writing Center	Students working with tutors on writing projects	M, Th 8:30a – 4:00p T, W 8:30a – 6:00p F 8:30a – 12:30p	12 PC's, printer	425-640-1750
MLT 159	SSD Computer Adaptive Equipment	Students who are registered with Services for Students with Disabilities (SSD)	M – Th 7:30a – 6:00p F 7:30a – 4:30p	25 PC's, 1 Mac, and 6 individual tutoring rooms and 6 individual testing rooms each with a PC, For a list of available software and assistive technology see http://www.edcc.edu/ssd/center.php	425-640-1320 TTY 425-774-8669
MLT 212	BSTEC	Open Lab when not scheduled for classes, BSTEC, Accounting Students have priority. Hours vary quarter by quarter.	Call to verify open lab times	34 PCs, printer, scanner SUM Software for medical transcription	425-640-1792
SQL 115	CWU Open Lab	CWU/EdCC students	(varies each quarter) M–Th 8:00a – 9:00p F 8:30a – 4:30p Sa 9:00a – 2:00p	30 PC's and 1 instructor PC, printer	CWU Front Desk
SQL 114	CWU Open Lab when SQL 115 is Full	CWU/EdCC students	M – F 10:00a – 2:00p	30 PC's and 1 instructor PC, printer	CWU Front Desk
Triton Student Center Game Room	Internet Access	Students with an EdCC or CWU computer account, 30 minute time limit on using computers	M – F 9:00a – 6:00p	4PC's, no printing	

COMPUTER RESOURCES AVAILABLE FOR EDMONDS COMMUNITY COLLEGE STUDENTS

OTHER CAMPUS RESOURCES

Academic Computer Services (This department manages instructional computers)

Phone: **425-640-1702**

acs@edcc.edu

<http://www.edcc.edu/acs/default.php>

TRiO Student Support Services (This department occasionally sponsors a workshop for low cost computer with outside agency.

Call to be added to list to be notified of next event.

Phone: **425-640-1753**

trio@edcc.edu

<http://www.edcc.edu/trio/contact.php>

COMPUTER RESOURCES AVAILABLE FOR EDMONDS COMMUNITY COLLEGE STUDENTS

OFF-CAMPUS COMPUTER RESOURCES

SNO-ISLE LIBRARIES NEAR EDMONDS COMMUNITY COLLEGE

(Many more libraries available throughout Snohomish and King Counties)

Edmonds Library: (425) 771-1933 FAX: (425) 771-1977 650 Main St. 98020 Edmonds, WA Mon., Tue., Wed., Thu. 10:00 am-9:00 pm Fri. 10 am-6 pm Sat. 10 am-5 pm Sun. 1 pm-5 pm	Lynnwood Library (425) 778-2148 FAX: (425) 774-7764 TTY: (800) 647-3753 19200 - 44th Ave. W. Lynnwood, WA 98036 Mon-Th 10 am-9 pm, Fri 10 am-6 pm, Sat 10 am-5pm, Sun 1pm-5pm
Mountlake Terrace Library (425) 776-8722 FAX: (425) 776-3411 23300 - 58th Ave. W Mountlake Terrace, WA 98043 Mon-Th 10 am-9 pm, Fri 10 am-6 pm, Sat 10 am-5pm, Sun 1pm-5pm	Mukilteo Library 425) 493-8202 FAX: (425) 493-1601 4675 Harbor Pointe Blvd. Mukilteo, WA 98275 Mon-Thu 10 am-9 pm, Fri 10 am-6 pm, Sat 10 am-5pm and Sun 1 pm-5 pm

LOW-COST COMPUTERS FOR LOW-INCOME & UNEMPLOYED INDIVIDUALS

InterConnection offers low-cost desktop computers to low-income and unemployed individuals. Every computer is refurbished to high standards and comes bundled with everything needed to be up and running in no time, including a free computer set-up class. Call InterConnection during regular business hours to make your order. Call **(206) 633-1517** or toll free **(866) 621-1068**. Hours are 10 to 6 Monday to Friday and Saturday 10 to 5. http://www.interconnection.org/get_individuals.html

COMPUTER RESOURCES AVAILABLE FOR EDMONDS COMMUNITY COLLEGE STUDENTS

INTERNET CAFES NEAR EDMONDS COMMUNITY COLLEGE (Free Wireless available for laptop computers)

Aloha Café

6808 196th St. SW

Lynnwood, WA

Hours: Monday-Friday: 5am to 10pm; Saturday: 7am to 10pm; Sunday: 7am to 9pm

Café Divan

20113 68th Avenue West

Lynnwood, WA

Hours: Monday-Saturday: 7am to 10pm; Sunday: 8am to 9pm

Café Ladro Edmonds

8403 Main

Edmonds, WA

425-670-1790

Hours: Sunday-Thursday: 5:30am to 9:00pm; Friday & Saturday: 5:30am to 10:00pm

Café Ladro, Lynnwood

6314 196th St SW

Lynnwood, WA 98036

(425) 248-2050

5:30am - 9:00pm every Day

County Wi Fi

[http://www.snohomish.org/files/documents/Free WiFi In Snohomish County.pdf](http://www.snohomish.org/files/documents/Free_WiFi_In_Snohomish_County.pdf)